



# **ALSTOM® LEGACY SERVICES**

# IEPC Energy

## A reliable Partner for Alstom®\* Legacy Systems



### Dedicated support throughout your plant's lifecycle

IEPC Energy provides trusted, expert assistance to operators of Alstom® Legacy systems across the entire lifecycle of their power plants, helping them achieve both operational reliability and economic performance.

### Your facility benefits from proven experience

If your power plant is equipped with Alstom® Legacy control systems, these systems require appropriate maintenance or modernization to continue meeting operational demands under optimal conditions. These control platforms were originally branded under names such as :

**"ALSTOM", "ALSTHOM", "CGEE ALSTHOM",  
"ALSTHOM ATLANTIQUE", "GEC  
ALSTHOM", "European Gas Turbines",  
"E.G.T.", "CEGELEC" or "ABB ALSTOM  
POWER".**



\* ALSTOM and related trademarks are the property of their respective owners. IEPC Energy is an independent provider and is not affiliated with, sponsored by, or endorsed by ALSTOM

# Our expertise at your service

## The know-how lives on at IEPC Energy

Our engineering team is composed primarily of **former Alstom® engineers**, many of whom were directly involved in the design, development, and deployment of these legacy systems. This continuity of expertise ensures that **IEPC Energy is now the reference center for the in-depth knowledge, tooling, and technical mastery** originally developed by Alstom®.

Our team understands your equipment, not just from documentation, but from **first-hand experience in engineering, commissioning, and field support worldwide**.

This unique heritage enables us to provide unmatched technical insight and long-term support for your installed base.

## Our mission

At IEPC Energy, our goal is to **safeguard your initial investment** by ensuring long-term operability of Alstom® legacy systems—even beyond the original hardware lifecycle.

## Our resources

**A dedicated team of more than 20 engineers with expertise in Alstom® Legacy** technologies are available. Various controllers and virtual machines are installed in our workshop to reproduce the configurations installed on site.





# A dedicated customer assistance division for tailor-made maintenance services



To fulfil our mission, we have established a **dedicated Customer Assistance Division** responsible for delivering high-value technical support. Drawing on **years of experience with the Alstom® Legacy products range**, we offer a complete portfolio of professional services, including :

- Supply of spare and repair parts with obsolescence management
- On-site technical interventions
- Expert hotline support
- Customized technical training
- Preventive and corrective maintenance
- System upgrade solutions
- Training

Depending on **your maintenance strategy**, IEPC Energy can deliver these services either on a per-request basis or through a **dedicated maintenance agreement** :

- Priority access to our service teams
- Direct contact with technical experts
- Preferential pricing structures
- Minimized response times

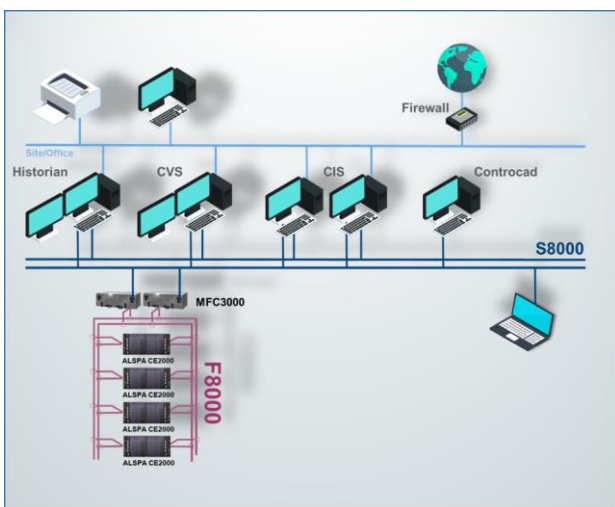
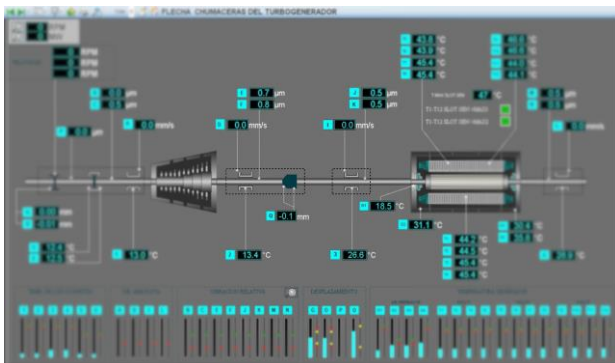
In addition, to extend the operational lifetime of your installed control systems, our maintenance contracts can be offered **well beyond the first 10 years of plant operation**, ensuring continuity and peace of mind.

# DCS ALSPA™ Series 5 & 6 preventive and corrective maintenance services

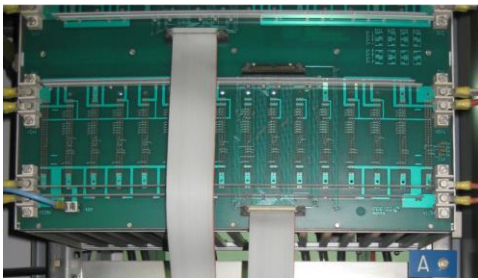


**IEPC Energy offers you its services to maintain your ALSPA™ P320, Series 5 & 6, system in operational conditions:**

- Preventive maintenance of the entire ALSPA™ system, according official maintenance guides.
- Analysis and resolution of network problems, time synchronization & NTP services issues, GPS clock configuration, Hirschmann switches configuration & monitoring (wireshark).
- Analysis and resolution of problems related to cell head PLCs and field PLCs (MFC3000, C80-75, X20, CE2000).
- Updates and modifications of supervision synoptics.
- Analysis and resolution of Historian problems: archiving failures, inability to access archived data, etc.
- Modification of PLC programs, modification of PLC sequences.



# Alstom® T20 & $\mu$ Z preventive and corrective maintenance services



## IEPC Energy offers its services to migrate T20 & $\mu$ Z systems by ensuring :

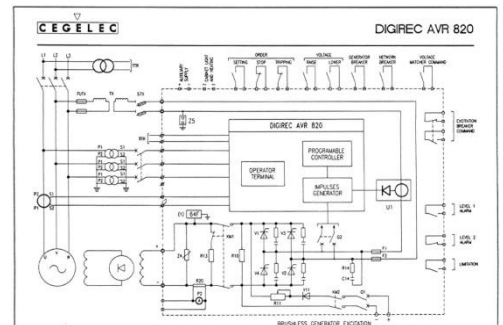
- Minimization of unit shutdown by adapting the Field/controller wiring.
- Re-encoding of T20 source files by an expert system into standardized IEC language for adaptation to the new controller.
- Advanced behavioral simulation prior to on-site transfer to minimize the impact on requalification duration.
- In-depth knowledge of T20 and  $\mu$ Z boards enabling the adaptation of source code by transferring the embedded logic from the boards (e.g., MAA).
- Native integration of cybersecurity and new communication standards.
- Possibility of integrating functional modifications, as well as adaptive and preventive maintenance tools.



# Excitation systems maintenance & assistance services

## Our services to maintain your excitation system in operational conditions:

- Preventive and corrective maintenance of the entire excitation system, according to the system and cards documentation
- Cards repair
- Modification / adjustments
- Tests and tuning (steps, voltage build-up, changeover, DC/AC injections for PSS, bridge control for OC & CC characteristics...)
- Training
- Hotline services.



## These services are available for the following systems:

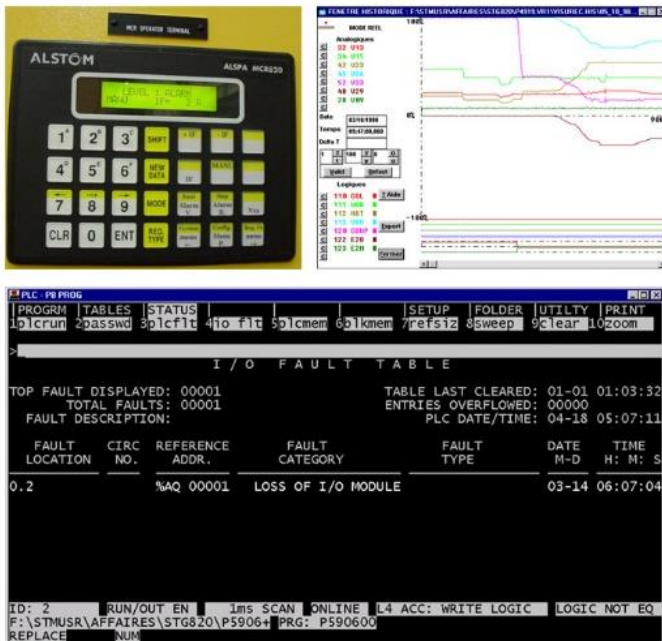
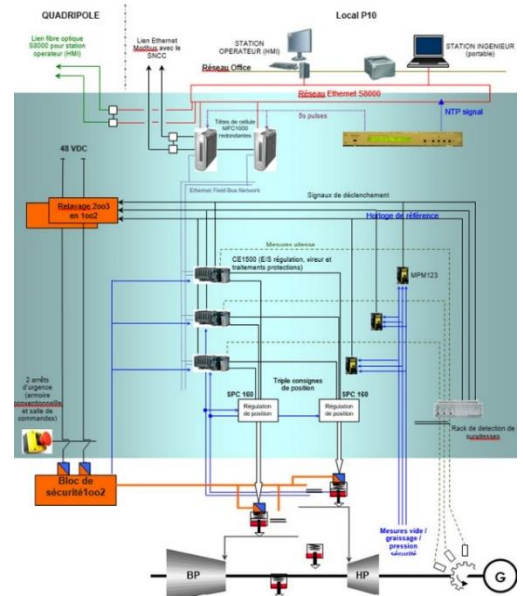
- Eurorec
- Microrec K4.0, K4.1, K4.2
- AVR 820
- ALSPA™ P320 AVR V1 & V2
- ControGen™



# Steam turbine control systems maintenance & assistance services

## Our services to maintain your steam turbine control system in operational conditions:

- Preventive and corrective maintenance of the entire control system, according to the turbine control system maintenance guide
- Modification of programs and parameters
- Repairs and Supply of turbine control system
- Training
- Hotline services.



## These services are available for the following systems:

- RMT
- STG 920 – Digirec 920
- STG 820
- Microrec
- Artic
- ControSteam™



# Retrofits & migrations from Alstom® to new systems



## If maintaining your DCS is no longer an option, IEPC Energy can still help you !

With its strong skills and experience with Alstom® DCS, IEPC Energy also offers you its expertise and solutions to migrate to a new DCS system.

### Why considering a retrofit?

- **Your DCS system is no longer maintained.** Moreover, as it ages, its compatibility with new products is compromised.
- **Cybersecurity is not up to date.** Old cybersecurity systems were not design to resist against modern attacks. As systems become more connected, a stronger cybersecurity design is mandatory.
- **Some spare parts might no longer be available.** Critical components of your DCS may not be available in the market anymore, which represent a threat to your production process.
- **Expertise is less available today.** If your DCS relies on obsolete technology, it may be difficult to find experts who can help maintain it in operational conditions

# Retrofits & migrations from ALSTOM® to new systems

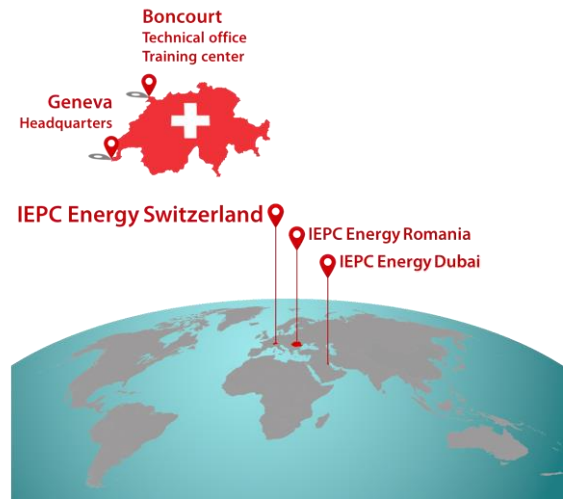


## IEPC Energy's commitments for a successful retrofit

- **Risk management and adaptability.** We only provide robust, proven and tested solutions which adapt to your production needs and conditions (rhythm, quality, continuity).
- **A fast, optimized and secure retrofit.** The modernization of your DCS should not be a threat to your process. IEPC Energy ensures that the modernization of the DCS is done as fast as possible, always maintaining the security and the continuity of critical systems.
- **A clear and measurable commitment throughout the intervention.** IEPC Energy commits with you until the end of the retrofit, and set clear and measurable milestones to help you control the retrofit process.
- **Shared decisions and transparent communication.** IEPC Energy gives you complete transparency through regular reporting, shared decisions and performance indicators. You keep total control of the retrofit process.

# IEPC Energy in brief

- €12M in sales since 2018.
- More than 2'000 Field Services performed since 2009.
- 65 Field Service Engineers assigned all around the world.
- 85% of our team are former Alstom engineers.



## Various references



If you want to know more about our services,  
please contact us

**IEPC Energy S.A.**  
Rue des Charmilles 8  
1203 GENEVA  
SWITZERLAND

**Phone : +41 22 338 07 20**  
**E-mail : [contact@iepc.ch](mailto:contact@iepc.ch)**

[www.iepc.ch](http://www.iepc.ch)